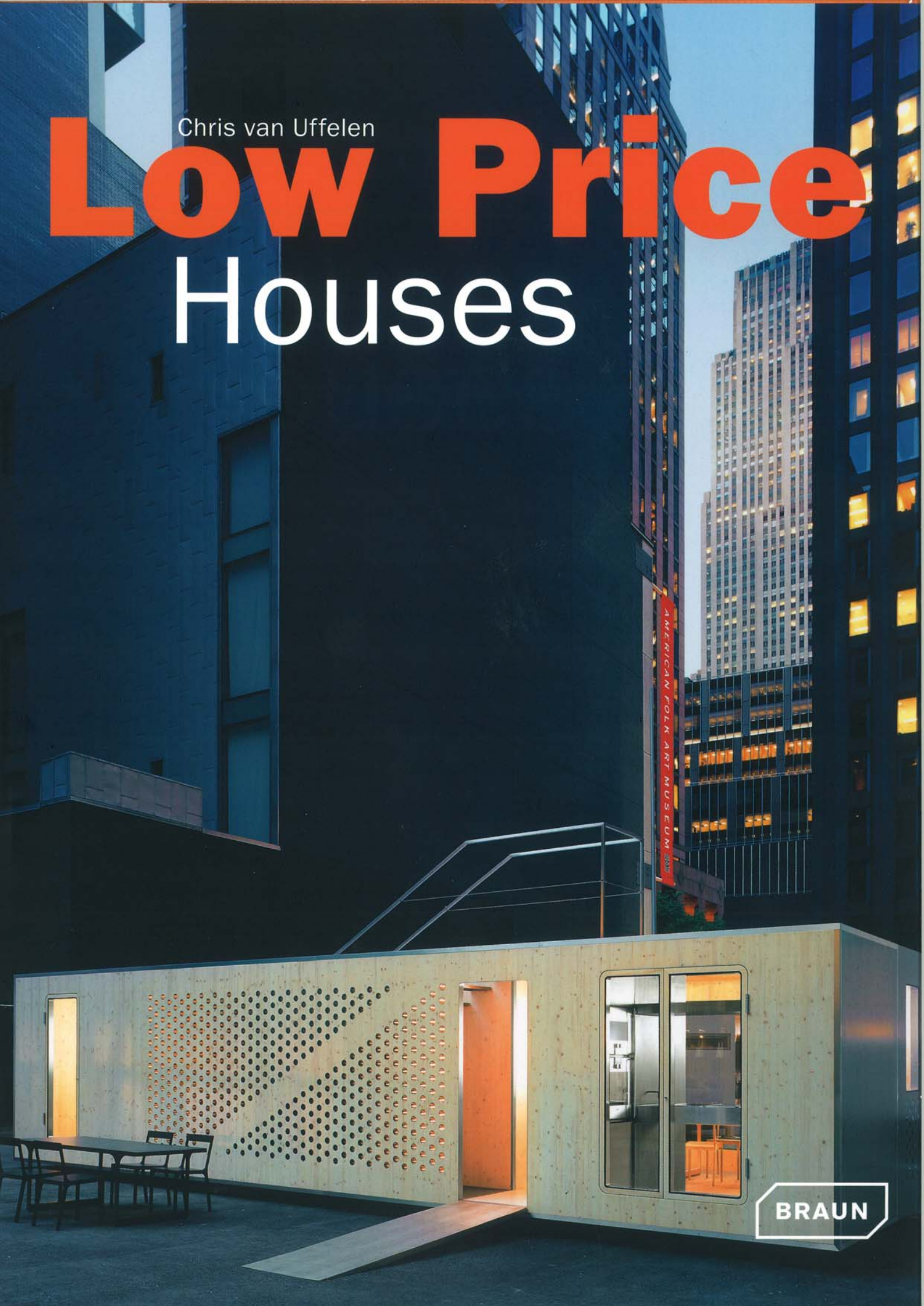


Chris van Uffelen

# Low Price Houses



BRAUN



Address: Ruthin, Wales, United Kingdom. Client: PH Worldwide Ltd. Completion: 2007. Costs: 60,415 GBP. Burgers total: 26,400. Gross floor area: 40 m<sup>2</sup>. Burgers / m<sup>2</sup>: 660. Means to reduce cost: modern method of construction, i.e. main components constructed off site.



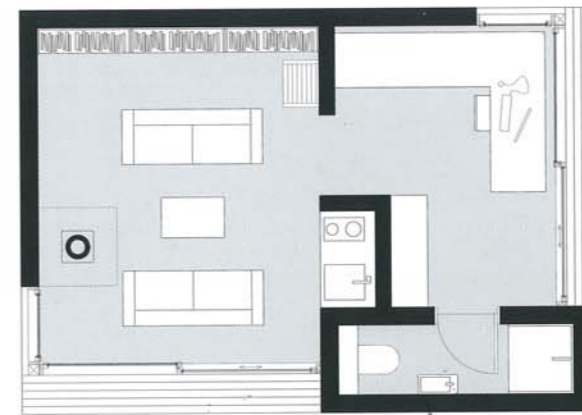
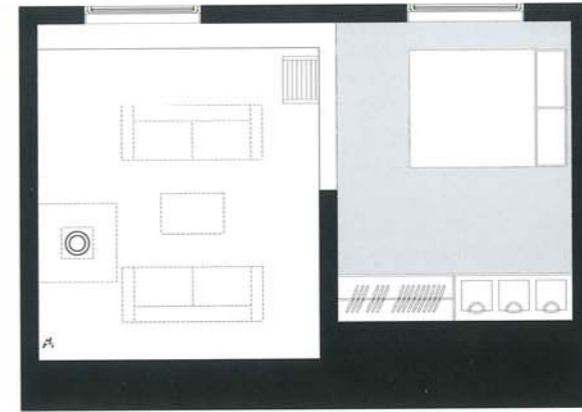
↑ | View of the south and east elevations  
→ | South elevation of mono pitched modular Ecospace

## Ecospace's Project

Ruthin, Wales

This building acts as a sanctuary, away from the main house, allowing the client to work from home in isolation without domestic distractions. Similarly, the relaxing space and guest accommodation act as a self-contained, detached space. The clients required a sustainable, fast track project with minimal disturbance to their busy lifestyles. The cedar-clad building with a birch wood interior and a sedum-planted roof was built with modern methods of construction using prefabricated structurally insulated panel systems, resulting in a fast track construction time of just ten days to completion.





- ←← | View towards study space with mezzanine level above
- ← | Floor plans, mezzanine level and ground floor
- ↓ | View towards living space

